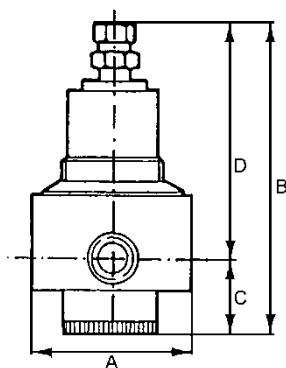
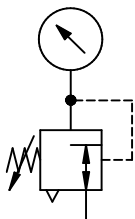


Stainless steel regulators for use in the chemical industry, mining, plant construction and special machinery industries, pneumatics, etc.
Pressure setting by hexagon head screw.

Max. input pressure	30 bar
Max. medium temperature	80 °C
Max. ambient temperature	80 °C
Housing	Stainless steel 1.4401 (AISI 316)
Sealant	NBR
Diaphragms	NBR/PTFE
Flow rate measurement	At $P_1 = 10$ bar, $P_2 = 6$ bar and pressure drop $\Delta p \leq 1$ bar

Reversible, stainless steel pressure regulator with self-relieving design and stainless steel pressure gauge

Art. No.	Type No.	Thread	Control range bar	Flow rate l/min	A mm	B mm	C mm	D mm
133525	580RM1-14-4	G 1/4	0.4 - 4	2320	64.0	167.0	50.0	117.0
133526	580RM1-14-17	G 1/4	1.7 - 17.5	2320	64.0	167.0	50.0	117.0
133527	580RM1-38-4	G 3/8	0.4 - 4	4900	64.0	167.0	50.0	117.0
133528	580RM1-38-17	G 3/8	1.7 - 17.5	4900	64.0	167.0	50.0	117.0
133529	580RM3-12-4	G 1/2	0.4 - 4	6175	82.0	169.0	50.0	119.0
133530	580RM3-12-17	G 1/2	1.7 - 17.5	6175	82.0	169.0	50.0	119.0
133531	580RM3-34-4	G 3/4	0.4 - 4	10195	82.0	169.0	50.0	119.0
133532	580RM3-34-17	G 3/4	1.7 - 17.5	10195	82.0	169.0	50.0	119.0
133533	580RM4-1-4	G 1	0.4 - 4	10195	120.0	236.0	100.0	136.0
133534	580RM4-1-17	G 1	1.7 - 17.5	10195	120.0	236.0	100.0	136.0



580RM3-12-4

Accessories / spare parts for stainless steel pressure regulator G 1/4 and G 3/8 (Size 1)

Art. No.	Type No.	Description
102510	4083	Pressure gauge Ø 63 mm, G 1/4 ET, 0 - 6 bar
102511	4086	Pressure gauge Ø 63 mm, G 1/4 ET, 0 - 25 bar
137114	580RM1-VS	Set of wearing parts
137113	580RM-BW	Mounting bracket

Accessories / spare parts for stainless steel pressure regulator G 1/2 and G 3/4 (Size 3)

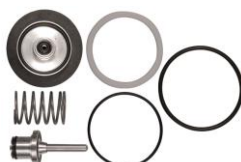
Art. No.	Type No.	Description
102510	4083	Pressure gauge Ø 63 mm, G 1/4 ET, 0 - 6 bar
102511	4086	Pressure gauge Ø 63 mm, G 1/4 ET, 0 - 25 bar
137115	580RM3-VS	Set of wearing parts
137113	580RM-BW	Mounting bracket

Accessories / spare parts for stainless steel pressure regulator G 1 (Size 4)

Art. No.	Type No.	Description
102510	4083	Pressure gauge Ø 63 mm, G 1/4 ET, 0 - 6 bar
102511	4086	Pressure gauge Ø 63 mm, G 1/4 ET, 0 - 25 bar
137116	580RM4-VS	Set of wearing parts
137113	580RM-BW	Mounting bracket



4086



580RM3-VS



580RM-BW